

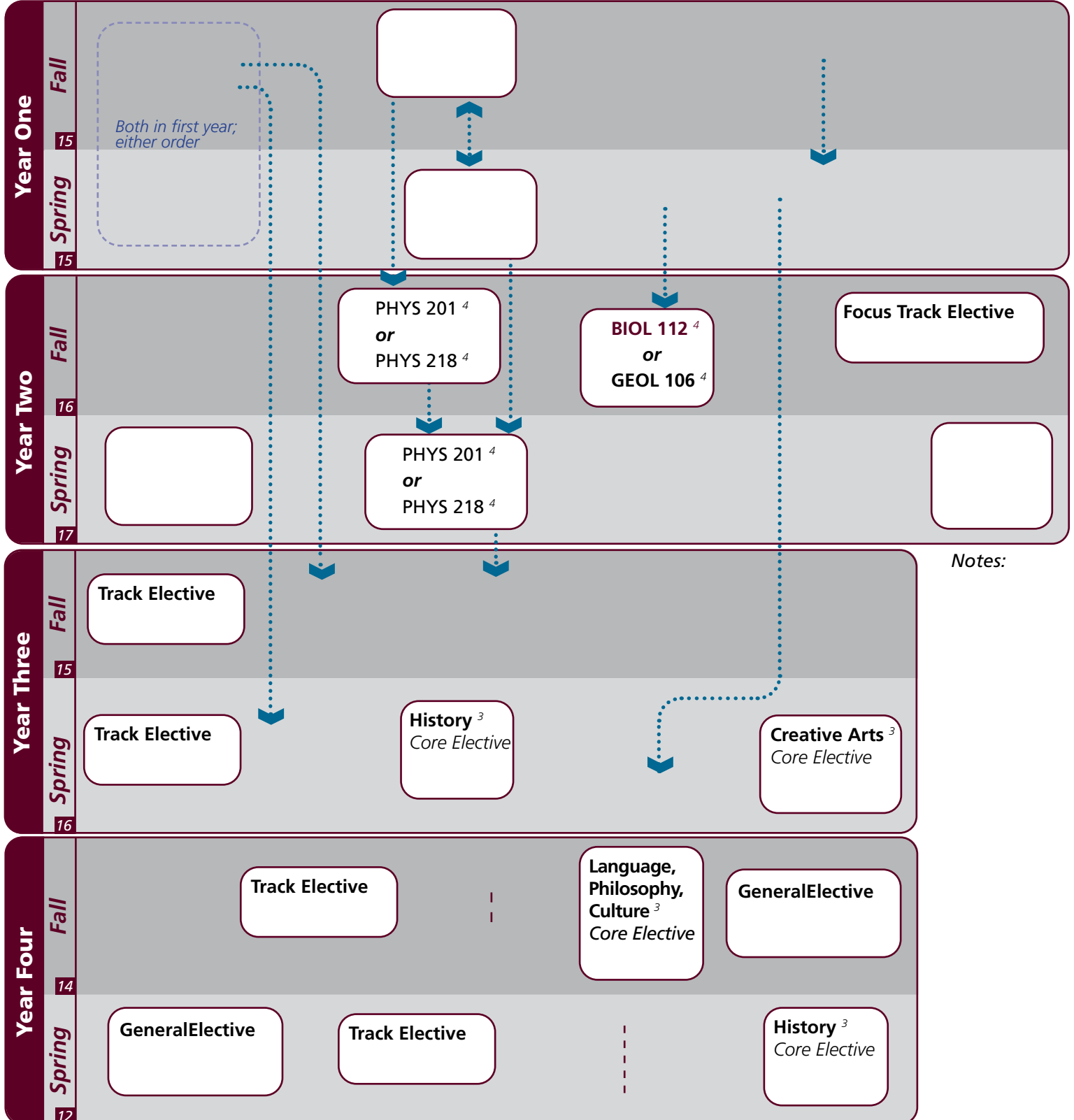
# Instructions

# Marine Sciences | 2021-2022 Catalog

- Download this file and open in **Adobe Reader** ([get.adobe.com/reader](http://get.adobe.com/reader))
- **Click once** on the category/ course to turn **blue for planned courses.**
- **Click twice** to turn yellow for **completed/in progress courses.**
- For elective areas, also select the appropriate course from the dropdown.
- **Submit** prior to your appointment.

Name: \_\_\_\_\_

UIN: \_\_\_\_\_



Notes:

## Major

### Texas A&M University at Galveston Course Options

<b>Major Coursework</b>	MARB 101 MARS 430 MARS 420	MARS 281 MARS 440	MARS 102 MARS 460	MARS 303 MARS 461	MARS 325 MARS 481	MARS 410 MARS 491
-------------------------	----------------------------------	----------------------	----------------------	----------------------	----------------------	----------------------

## Major Tracks (Select 1 Track)

<b>Integrated Track</b>	<b>Focus Electives</b> <sup>6</sup> <i>Select 6 hours</i>	Select 1: Select 1:	CHEM 227 & 237 CHEM 228 & 238	MARS 306 GEOL 106	MATH 251 MATH 308	
	<b>Breadth Electives</b> <sup>12</sup> <i>Select 4 courses</i>	CHEM 300-499	GEOL 331	GEOL 300-499	MARS 300-499	
<b>Geological Track</b>	<b>Focus Electives</b> <sup>6</sup>	GEOL 106	MARS 306			
	<b>Breadth Electives</b> <sup>12</sup> <i>Select 4 courses</i>	GEOL 331 MARS 415	GEOL 300-499 MARS 430-*432	MARS 305 MARS 435	MARS 340 MARS 489	MARS 370 or GEOG 370
<b>Physical Track</b>	<b>Focus Electives</b> <sup>6</sup>	MATH 251	MATH 308			
	<b>Breadth Electives</b> <sup>12</sup> <i>Select 4 courses</i>	ATMO 363 PHYS 300-499	MARS 408 STAT 303	MARS 415	MARS 470	MARS 489
<b>Chemical Track</b>	<b>Focus Electives</b> <sup>6</sup>	CHEM 227 & 237	CHEM 228 & 238			
	<b>Breadth Electives</b> <sup>12</sup> <i>Select 4 courses</i>	ATMO 363 STAT 303	CHEM 300-499	MARS 340	MARS 360	MARS 470

## Core

### Texas A&M University at Galveston Course Options

<b>Communication</b> <sup>6</sup>	Required: Select 1 from:	†ENGL 104 COMM 203	COMM 205	ENGL 203	ENGL 210
<b>Mathematics</b> <sup>8</sup>	MATH 147 or 151	MATH 148, 150, or 152			
<b>Life &amp; Physical Sciences</b> <sup>24</sup> <i>All courses required</i>	BIOL 111	BIOL 112 or GEOL 106	CHEM 119	CHEM 120	
<b>Language, Philosophy, Culture</b> <sup>3</sup> <i>Select 1 course</i>	†ANTH 210 ENGL 334 HIST 242	ANTH 316 ENGL 335 MAST 270	*ENGL 204 *ENGL 338 *PHIL 111	*ENGL 222 *ENGL 374 PHIL 251	*ENGL 253 *GEOG 202 *PERF 226 *PERF 281
<b>Creative Arts</b> <sup>3</sup> <i>Select 1 course</i>	*ARTS 150 *†PERF 301	ENGL 212	*ENGL 251	HISP 204	
<b>Social &amp; Behavioral Science</b> <sup>3</sup>	*MARS 210				
<b>American History</b> <sup>6</sup> <i>Select 2 courses</i>	HIST 105	HIST 106	HIST 226	HIST 232	
<b>Political Science</b> <sup>6</sup>	POLS 206	POLS 207			

## University

### Texas A&M University at Galveston Course Options

<b>Writing Intensive</b> <sup>6</sup>	MARS 281	MARS 430	MARS 461			
<b>International and Cultural Diversity</b> <sup>3</sup> <i>Select 1 course</i>	<i>Note that any * marked major or core course will concurrently fulfill both requirements</i>					
	*ARTS 150 *ENGL 374 MARA 440 MARS 432 NAUT 400	*ENGL 204 GEOG 201 MARB 340 MART 400 PSYC 107	*ENGL 222 *GEOG 202 MARE 400 MAST 411 SOCI 205	*ENGL 251 *GEOG 301 MARR 400 *PERF 226 SPMT 336	*ENGL 253 HIST 405 *MARS 210 *PERF 281 SPMT 337	*ENGL 338 KINE 282 MARS 280 *PERF 301
<b>Cultural Discourse</b> <sup>3</sup> <i>Select 1 course</i>	<i>Note that any † marked major or core course will concurrently fulfill both requirements</i>					
	†ANTH 210 †PHIL 111	†ENGL 104	MARA 373	MAST 226	MAST 340	†PERF 301
<b>General Electives</b>	Free electives as needed to reach 120 cumulative hours					

- Courses in this section can concurrently fulfill a Core or Major Requirement;
- Two semesters of a single foreign language is required for students who did not complete the foreign language req in high school