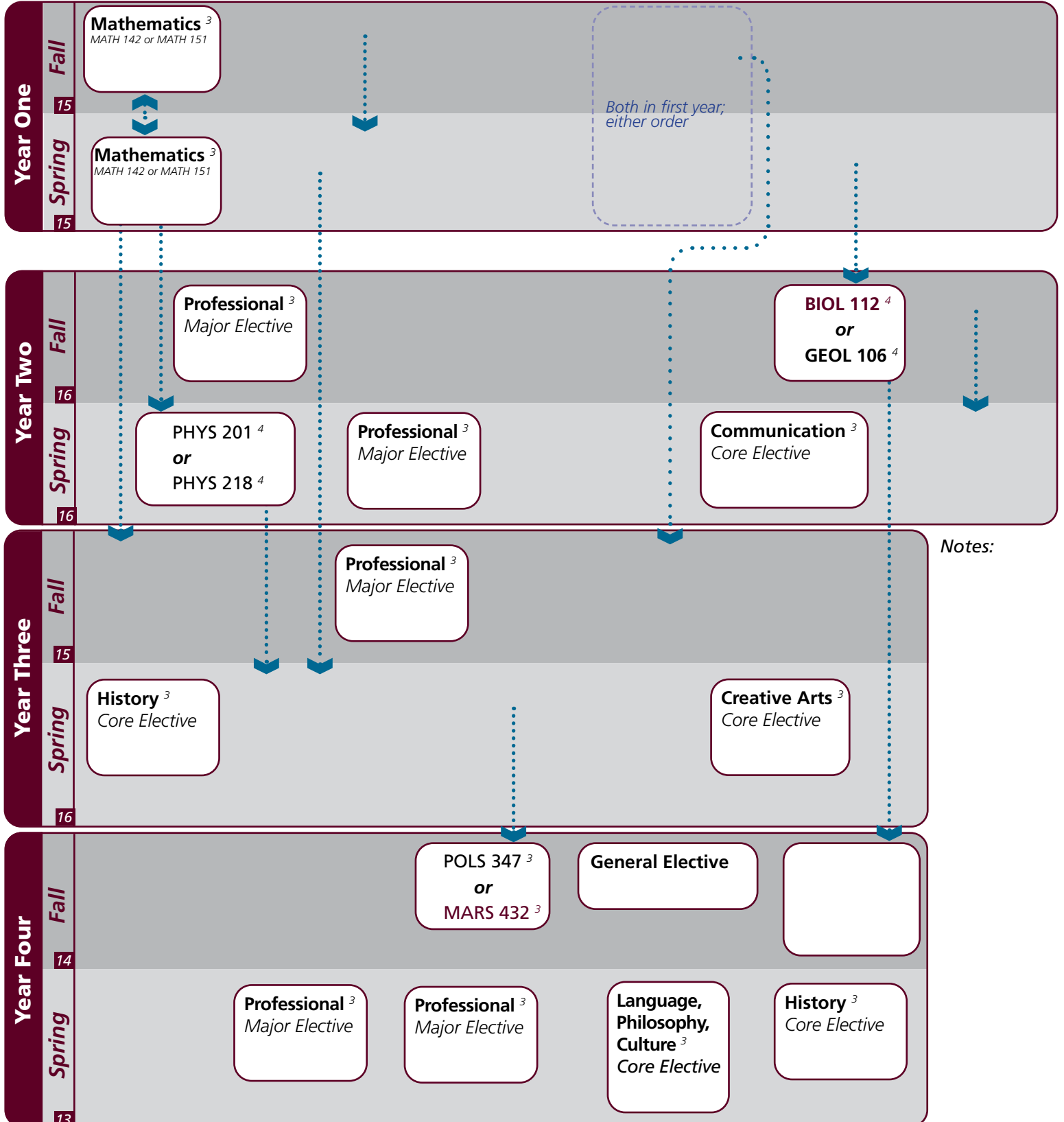


# Instructions

- Download this file and open in **Adobe Reader** ([get.adobe.com/reader](http://get.adobe.com/reader))
- **Click once** on the category/ course to turn blue for **planned courses**.
- **Click twice** to turn yellow for **completed/in progress courses**.
- For elective areas, also select the appropriate course from the dropdown.
- **Submit** prior to your appointment.

Name: \_\_\_\_\_

UIN: \_\_\_\_\_



# Coastal Environmental Science & Society | 2021-2022 Catalog

Notes:

Major	Texas A&M University at Galveston Course Options					
<b>Major Coursework</b> <sup>32</sup>	MARB 101 MARS 420	*MARS 280 MARS 430	MARS 102 MARS 481	MARS 310 MARS 491	MARS 325 MARS 425/426 or MARB 430	MARS 350
<b>Supporting Coursework</b> <sup>12</sup>	ECON 202	ECON 203	MARA 363	POLS 347 or *MARS 432		
<b>Professional Electives</b> <sup>15</sup> <i>Select 15 hours</i>	CHEM 316 MARB 438 MARS 410 MARS 484	CHEM 318 MARB 445 MARS 412 MARS 489	MARA 470 MARS 305 MARS 415 MARS 491	MARB 320 MARS 306 *MARS 432	MARB 370 MARS 330 MARS 435	MARB 423 MARS 370 MARS 440

Core	Texas A&M University at Galveston Course Options					
<b>Communication</b> <sup>6</sup>	Required: Select 1 from:		†ENGL 104 COMM 203	COMM 205	ENGL 203	ENGL 210
<b>Mathematics</b> <sup>11</sup> <i>3 courses required</i>	MATH 147 or 151		MATH 150, 148, or 152		STAT 303	
<b>Life &amp; Physical Sciences</b> <sup>20</sup> <i>All courses required</i>	PHYS 201 or 206/226 CHEM 120		BIOL 111	BIOL 112 or GEOL 106		CHEM 119
<b>Language, Philosophy, Culture</b> <sup>3</sup> <i>Select 1 course</i>	†ANTH 210 ENGL 334 HIST 242	ANTH 316 ENGL 335 MAST 270	*ENGL 204 *ENGL 338 †PHIL 111	*ENGL 222 *ENGL 374 PHIL 251	*ENGL 253 *GEOG 202	ENGL 330 *GEOG 301
<b>Creative Arts</b> <sup>3</sup> <i>Select 1 course</i>	*ARTS 150 *†PERF 301	ENGL 212	*ENGL 251	HISP 204	*PERF 226	*PERF 281
<b>Social &amp; Behavioral Science</b> <sup>3</sup>	*MARS 210					
<b>American History</b> <sup>6</sup> <i>Select 2 courses</i>	HIST 105	HIST 106	HIST 226	HIST 232		
<b>Political Science</b> <sup>6</sup>	POLS 206	POLS 207				

University	Texas A&M University at Galveston Course Options					
<b>Writing Intensive</b> <sup>6</sup>	MARS 430	MARS 280				
<b>International and Cultural Diversity</b> <sup>3</sup> <i>Select 1 course</i>	<i>Note that any * marked major or core course will concurrently fulfill both requirements</i>					
	*ARTS 150 *ENGL 374 MARA 440 MARS 432 NAUT 400	*ENGL 204 GEOG 201 MARB 340 MART 400 PSYC 107	*ENGL 222 *GEOG 202 MARE 400 MAST 411 SOCI 205	*ENGL 251 *GEOG 301 MARR 400 *PERF 226 SPMT 336	*ENGL 253 HIST 405 *MARS 210 *PERF 281 SPMT 337	*ENGL 338 KINE 282 MARS 280 *PERF 301
<b>Cultural Discourse</b> <sup>3</sup> <i>Select 1 course</i>	<i>Note that any † marked major or core course will concurrently fulfill both requirements</i>					
	†ANTH 210 †PHIL 111	†ENGL 104	MARA 373	MAST 226	MAST 340	†PERF 301
<b>General Electives</b>	Free electives as needed to reach 120 cumulative hours					

- Courses in this section can concurrently fulfill a Core or Major Requirement;
- Two semesters of a single foreign language is required for students who did not complete the foreign language req in high school