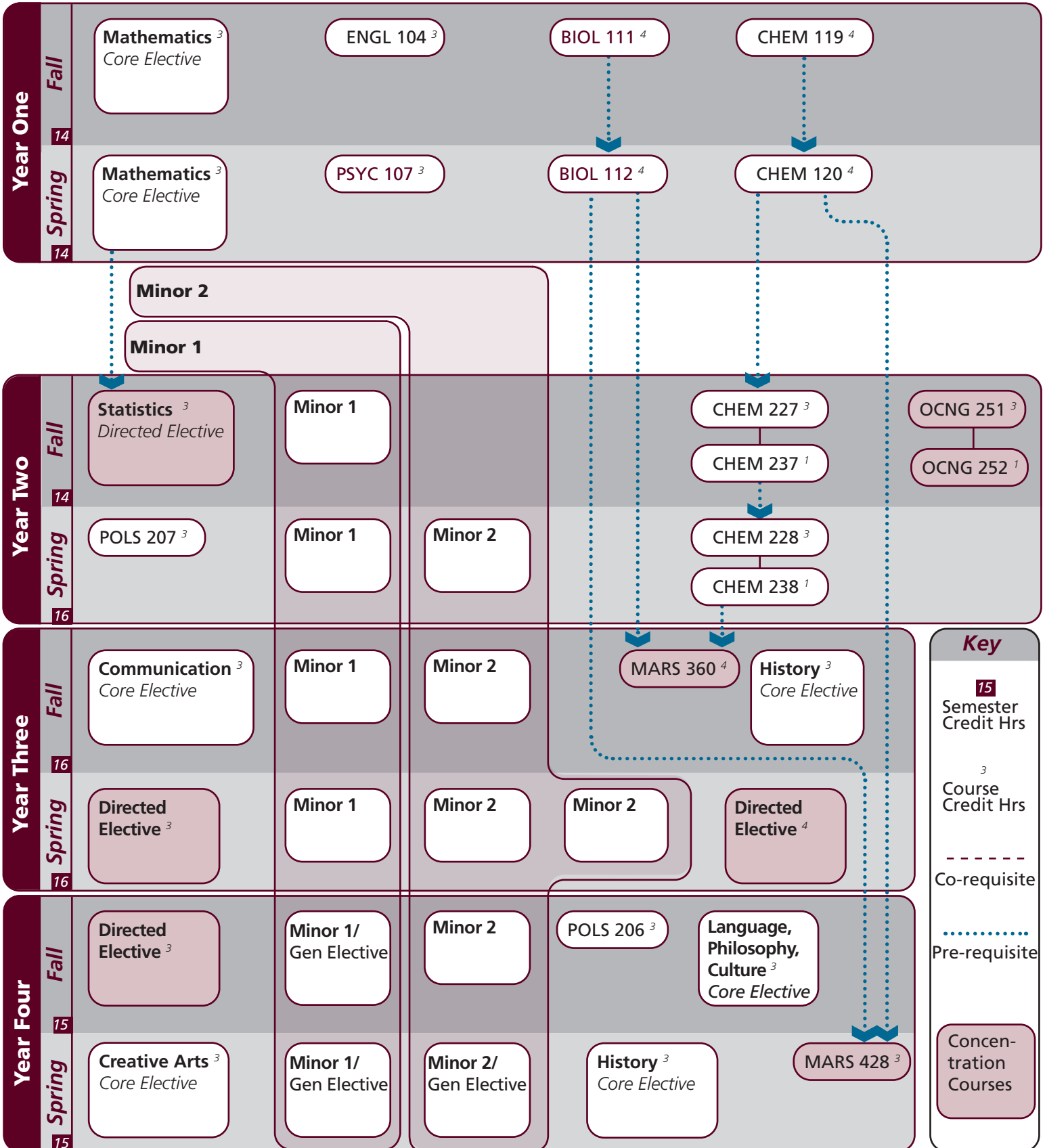


Name: _____

UIN: _____

Notes:



Notes:

Major	Texas A&M University at Galveston Course Options					
Concentration Requirements	MARS 360	MARS 428	OCNG 251	OCNG 252		
Statistics Requirement ³	MARB 303	SCMT 303	STAT 201	STAT 303		
Directed Electives ¹⁰ <i>Select 10 hours</i>	BIOL 351 MARB 420	CHEM 383 MARB 430	MARB 301 MARS 325	MARB 310 OCNG 420	MARB 401	MARB 414
Required Minor 1 ¹⁵⁻¹⁸	Course work consists of 15–18 hours with a minimum of 6 in residence at the 300–400 level. At least one of the two minors must be outside the college offering the area of concentration.					
Required Minor 2 ¹⁵⁻¹⁸	Course work consists of 15–18 hours with a minimum of 6 in residence at the 300–400 level. At least one of the two minors must be outside the college offering the area of concentration.					

Core	Texas A&M University at Galveston Course Options					
Communication ⁶ <i>2 courses required</i>	<i>Required:</i>	†ENGL 104				
	<i>Select One:</i>	COMM 203	†ENGL 203	ENGL 210		
Mathematics <i>Select 2 courses</i>	MATH 140 MATH 166	MATH 141 PHIL 240	MATH 142	MATH 150	MATH 151	MATH 152
Life & Physical Sciences ²⁴ <i>All courses required</i>	BIOL 111	BIOL 112	CHEM 119	CHEM 120	CHEM 227/237	CHEM 228/238
Language, Philosophy, Culture ³ <i>Select 1 course</i>	†ANTH 210 ENGL 334 HIST 242	ANTH 316 ENGL 335 *SPAN 201	*ENGL 204 *ENGL 338 *SPAN 202	*ENGL 222 *ENGL 374	*ENGL 253 *GEOG 202	ENGL 330 *GEOG 301
Creative Arts ³ <i>Select 1 course</i>	*ARTS 150 *THAR 281	ENGL 212	*ENGL 251	HISP 204	KINE 210	*MUSC 226
Social & Behavioral Science ³	*PSYC 107					
American History ⁶ <i>Select 2 courses</i>	HIST 105	HIST 106	HIST 226	HIST 232		
Political Science ⁶	POLS 206	POLS 207				

University	Texas A&M University at Galveston Course Options					
Writing Intensive ⁶	Consult Advisor					
International and Cultural Diversity ³ <i>Select 1 course</i>	<i>Note that any * marked major or core course will concurrently fulfill both requirements</i>					
	*ARTS 150	*ENGL 204	*ENGL 222	*ENGL 251	*ENGL 253	*ENGL 338
	*ENGL 374	GEOG 201	*GEOG 202	*GEOG 301	HIST 405	MARA 440
	MARB 340	MARE 400	MARR 400	MARS 210	MARS 280	MARS 432
	MART 400	MAST 411	*MUSC 226	NAUT 400	*PSYC 107	SOCI 205
	*SPAN 201	*SPAN 202	SPAN 304	SPAN 412	SPMT 336	*THAR 281
Cultural Discourse ³ <i>Select 1 course</i>	<i>Note that any † marked major or core course will concurrently fulfill both requirements</i>					
	†ANTH 210	†ENGL 104	†ENGL 203	MARA 373	MAST 226	MAST 340
General Electives	Free electives as needed to reach 120 cumulative hours					

- Courses in this section can concurrently fulfill a Core or Major Requirement;
- Two semesters of a single foreign language is required for students who did not complete the foreign language req in high school