

Marine Fisheries | 2020-2021 Catalog

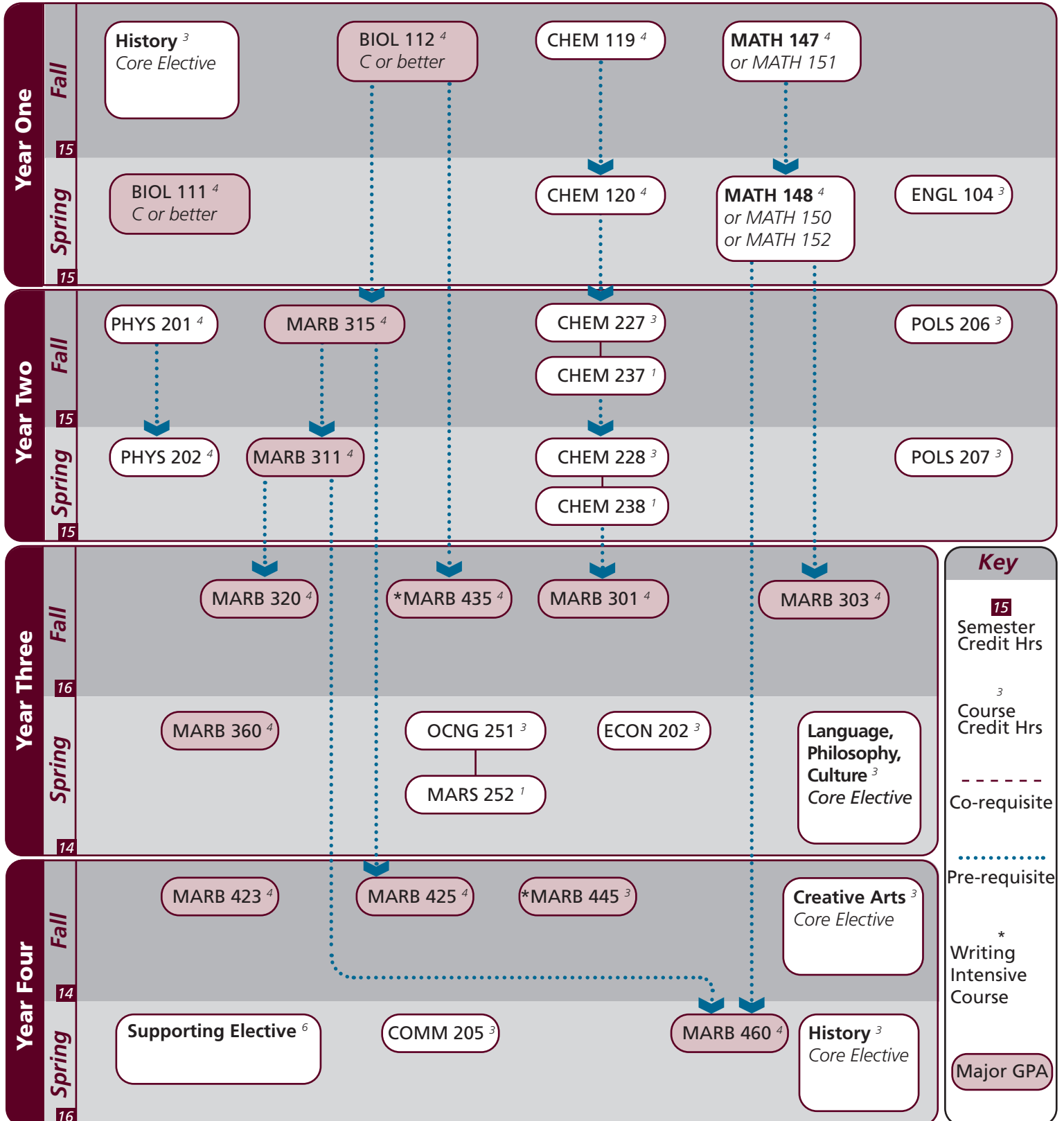
Name: _____

UIN: _____

Catalog information: catalog.tamu.edu

“View Degree Evaluation”: <https://howdy.tamu.edu/uPortal/f/my-record/>

Notes:



Notes:

Major	Texas A&M University at Galveston Course Options					
Major Coursework	^BIOL 111 MARB 315 MARB 445	^BIOL 112 MARB 320 MARB 460	MARB 101 MARB 360	MARB 301 MARB 423	MARB 303 MARB 425	MARB 311 MARB 435
Supporting Electives ⁵ <i>Select 5 hours</i>	MARB 300 - 499					
^ Requires C or better						

Core	Texas A&M University at Galveston Course Options					
Communication ⁶ <i>Both courses required</i>	COMM 205	†ENGL 104				
Mathematics ⁶ <i>Select 2 courses</i>	MATH 147 or 151		MATH 148, 150, or 152			
Life & Physical Sciences ²⁴ <i>All courses required</i>	CHEM 119 OCNG 251	CHEM 120 MARS 252	CHEM 227 PHYS 201	CHEM 237 PHYS 202	CHEM 228	CHEM 238
Language, Philosophy, Culture ³ <i>Select 1 course</i>	†ANTH 210 ENGL 334 HIST 242	ANTH 316 ENGL 335 *SPAN 201	*ENGL 204 *ENGL 338 *SPAN 202	*ENGL 222 *ENGL 374	*ENGL 253 *GEOG 202	ENGL 330 *GEOG 301
Creative Arts ³ <i>Select 1 course</i>	*ARTS 150 *THAR 281	ENGL 212	*ENGL 251	HISP 204	KINE 210	*MUSC 226
Social & Behavioral Science ³	ECON 202					
American History ⁶ <i>Select 2 courses</i>	HIST 105	HIST 106	HIST 226	HIST 232		
Political Science ⁶ <i>Both courses required</i>	POLS 206	POLS 207				

University	Texas A&M University at Galveston Course Options					
Writing Intensive ⁶	MARB 435	MARB 445				
International and Cultural Diversity ³ <i>Select 1 course</i>	<i>Note that any * marked major or core course will concurrently fulfill both requirements</i>					
	*ARTS 150 *ENGL 374 *MARB 340 MART 400 *SPAN 201	*ENGL 204 GEOG 201 MARE 400 MAST 411 *SPAN 202	*ENGL 222 *GEOG 202 MARR 400 *MUSC 226 SPAN 304	*ENGL 251 *GEOG 301 MARS 210 NAUT 400 SPAN 412	*ENGL 253 HIST 405 MARS 280 PSYC 107 SPMT 336	*ENGL 338 MARA 440 MARS 432 SOCI 205 *THAR 281
Cultural Discourse ³ <i>Select 1 course</i>	<i>Note that any † marked major or core course will concurrently fulfill both requirements</i>					
	†ANTH 210	†ENGL 104	ENGL 203	MARA 373	MAST 226	MAST 340
General Electives	Free electives as needed to reach 120 cumulative hours					

- Courses in this section can concurrently fulfill a Core or Major Requirement;
- Two semesters of a single foreign language is required for students who did not complete the foreign language req in high school