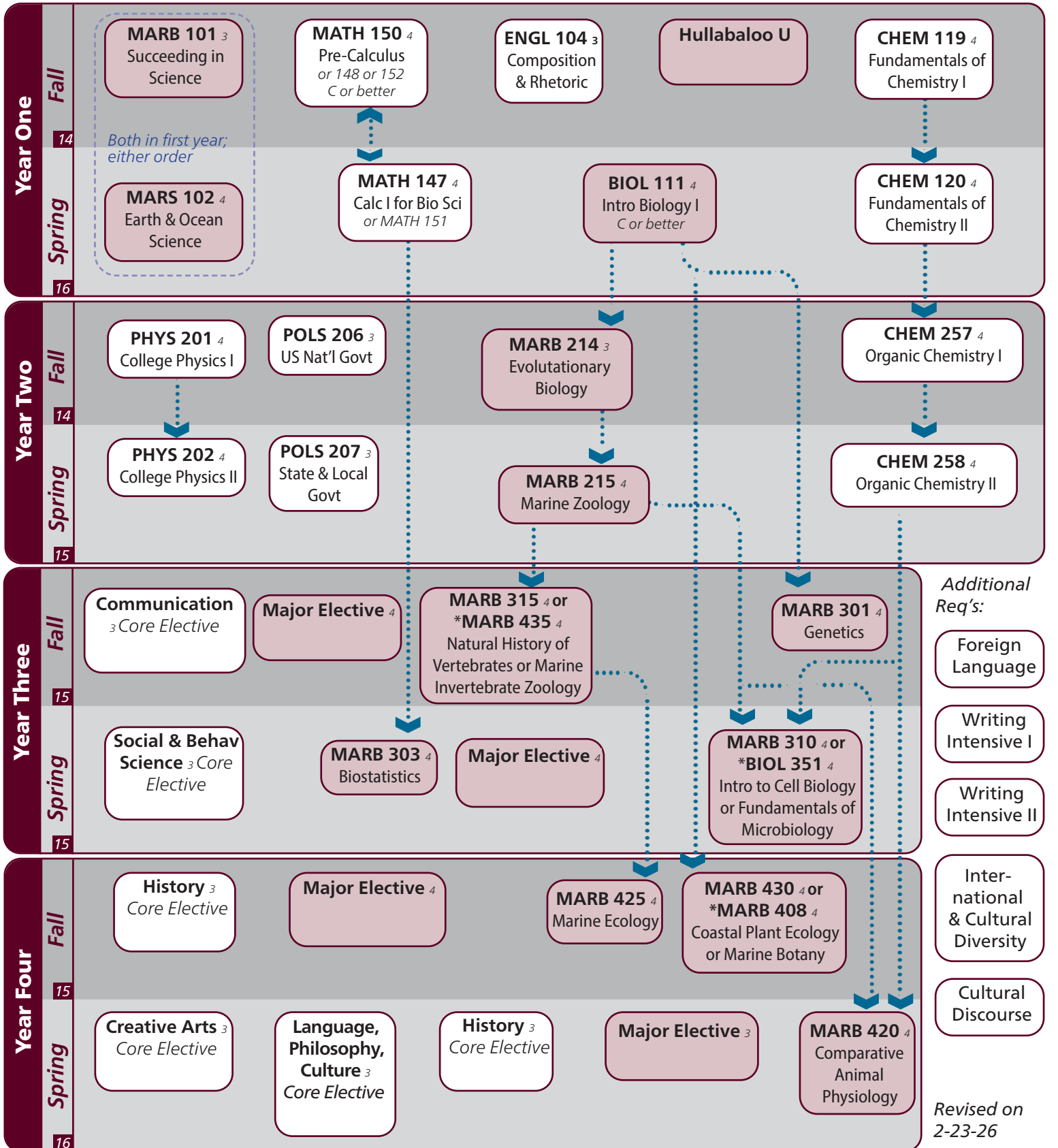


Catalog information: catalog.tamu.edu

“View Degree Evaluation”: <https://howdy.tamu.edu/uPortal/f/my-record/>

Key	Complete	Upcoming Term	Possible Adjustment	15 Semester Course 3 Credit Hrs	Major GPA Pre-requisite	* Writing Intensive



Marine Biology | 2026-2027 Catalog

Notes:

Major	Texas A&M University at Galveston Course Options						
Major Coursework	^BIOL 111 MARB 420	MARS 102 MARB 425	MARB 101 MARB 315 or MARB 435	MARB 214 MARB 430 or MARB 408	MARB 215 MARB 408	MARB 301 MARB 310 or BIOL 351	MARB 303 MARB 310 or BIOL 351
Major Electives ¹⁴ Select 18 hours	BIOL 351; FSCI 360, MARB 300-499; MARS 305, MARS 325. Students can only select 2 mammals courses (MARB 400, MARB 401, MARB 403, or MARB 407).						
^ Requires C or better							

Core	Texas A&M University at Galveston Course Options					
Communication ⁶	Required: Select 1 from:	†ENGL 104 COMM 203	COMM 205	†ENGL 203	ENGL 210	
Mathematics ⁸ Both courses required	MATH 147 or MATH 151	MATH 148, 150, or 152				
Life & Physical Sciences ²⁴ All courses required	CHEM 119 PHYS 201	CHEM 120 PHYS 202	CHEM 227	CHEM 237	CHEM 228	CHEM 238
Language, Philosophy, Culture ³ Select 1 course	†ANTH 210 †HIST 240	ANTH 316 HIST 242	*ENGL 204 MAST 270	ENGL 334 †PHIL 111	ENGL 335 PHIL 251	*ENGL374
Creative Arts ³ Select 1 course	*ARTS 150 *THEA 281	ENGL 212	*ENGL 251	HISP 204	*MUSC 226	†PERF 301
Social & Behavioral Science ³ Select 1 course	ECON 202 *SOCI 205	ECON 203	*GEOG 201	*KINE 282	*MARS 210	*PBSI 107
American History ⁶ Select 2 courses	HIST 105	HIST 106	HIST 226	HIST 232		
Political Science ⁶ Both courses required	POLS 206	POLS 207				

University	Texas A&M University at Galveston Course Options					
Writing Intensive ⁶ Select 2 courses	BIOL 351	MARB 403	MARB 408	MARB 433	MARB 435	†MARB 445
International and Cultural Diversity ³ Select 1 course	<i>Note that any * marked major or core course will concurrently fulfill both requirements</i>					
	*ARTS 150	ECON 452	*ENGL 204	*ENGL 251	*ENGL 374	*GEOG 201
	*KINE 282	MARA 440	*MARS 210	MAST 411	*MUSC 226	*PBSI 107
	POLS 231	*SOCI 205	*THEA 281			
Cultural Discourse ³ Select 1 course	<i>Note that any † marked major or core course will concurrently fulfill both requirements</i>					
	†ANTH 210	†ENGL 104	FSCI 334	†HIST 240	MARA 373	†MARB 445
	MAST 226	†PERF 301	†PHIL 111			

- Courses in this section can concurrently fulfill a Core or Major Requirement;
- Two semesters of a single foreign language is required for students who did not complete the foreign language req in high school.