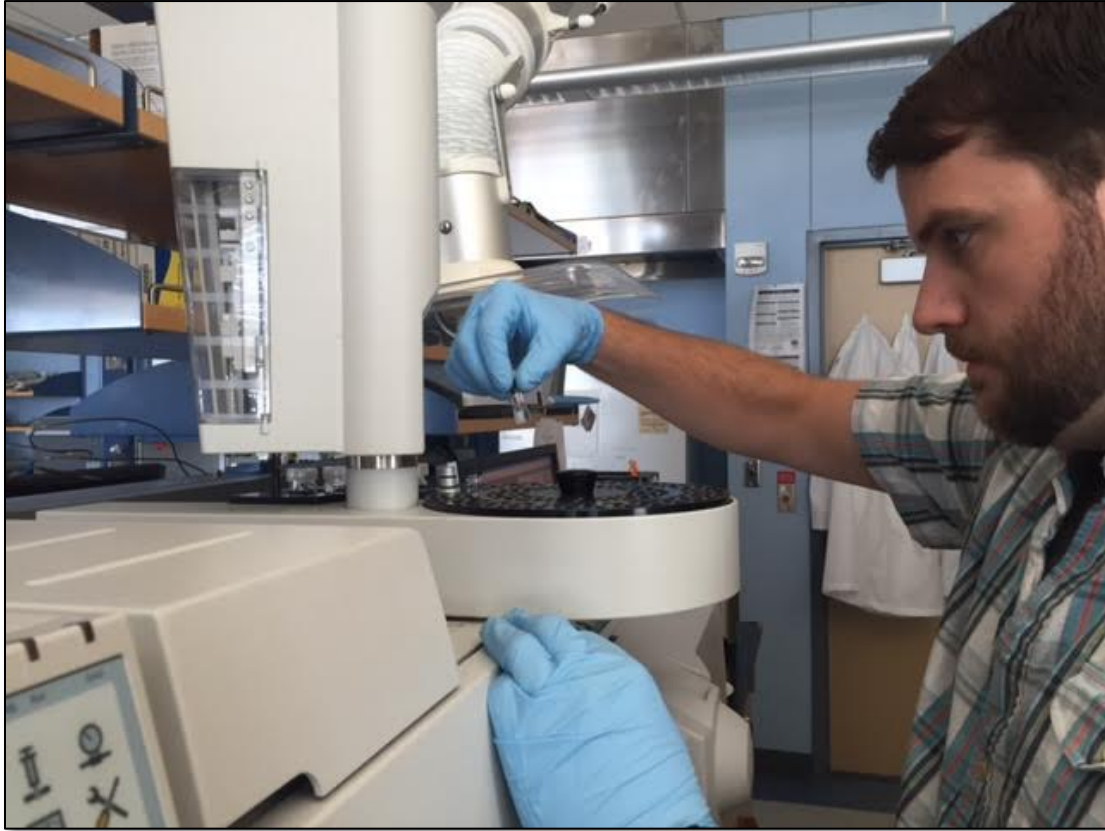


Matthew Norwood, MARS

Measuring the Role of Ecological Shifts and Environmental Change on Organic Carbon Stocks in Salt Marsh and Mangrove Dominated Wetlands located along the Texas Gulf Coast



In this picture I'm analyzing samples on our lab's Gas Chromatography Mass Spectrometer for lignin bio-markers. We are using lignin bio-markers, organic carbon and the stable carbon isotope, delta C-13, to better understand the quantity and quality of carbon storage among Texas Coastal Wetlands. We are trying to answer two main questions with this study. a) How does woody expansion impact carbon storage within Texas Coastal Wetlands and b) what is the total carbon load (soil carbon and biomass carbon) for Texas Coastal wetlands.