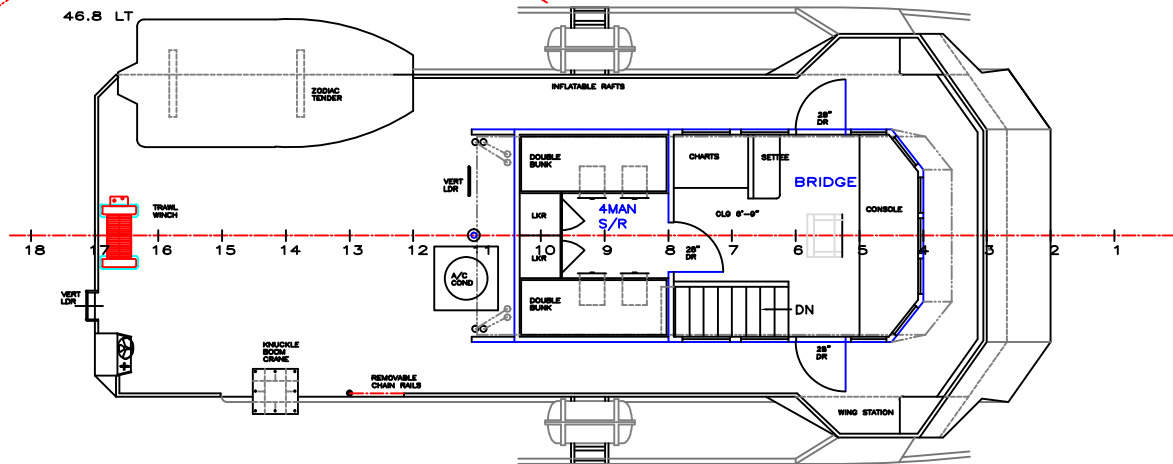
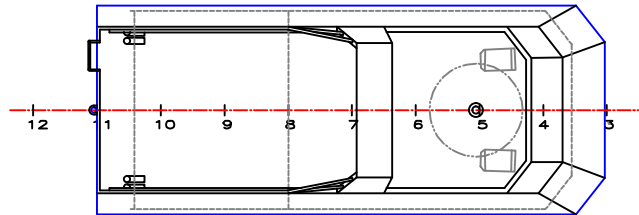


LENGTH OVERALL 64'-9"  
 LENGTH DESIGN WATERLINE 63'-6"  
 BREADTH OVERALL 21'-6"  
 HULL BREADTH 5'-10"  
 HULL DEPTH AT MIDSHIP 9'-3"  
 BRIDGE CLEARANCE AT BOW 4'-2"  
 MINIMUM BRIDGE CLEARANCE 3'-5"  
 FUEL CAPACITY 2,500 GAL  
 WATER CAPACITY 325 GAL  
 SEWAGE CAPACITY 325 GAL  
 PASSENGER CAPACITY 49  
 MAIN ENGINE POWER 2x500 HP  
 GENERATOR CAPACITY 2x33 KW  
 DESIGN DRAFT (HULL) 4'-6"  
 DESIGN DISPLACEMENT 46.8 LT



**RYFFE YACHTS**  
 Texas • Houston, Texas • Fort Worth

TEXAS A&M GALVESTON  
 64x21x9 RESEARCH VESSEL  
**UPPER DECK ARRANGEMENTS**

DRAWN:	PLT	DATE:	AD1-0
DATE:	DEC 2013	REVISION:	0
SCALE:	3/8"=1'-0"	TITLE NO.:	A-3